



No matter what printing challenges you face, Amber is always a smooth solution. The paper range is a broad selection of uncoated high-white quality graphical fine papers with wide grammages suitable for many application areas. Amber offers unique printing properties and outstanding runnabiliy. It’s white-ness make sure that written text stand out and leave a strong impression and images are perfectly reproduced. When you are looking for a reliable choice for your everyday work, just add Amber.

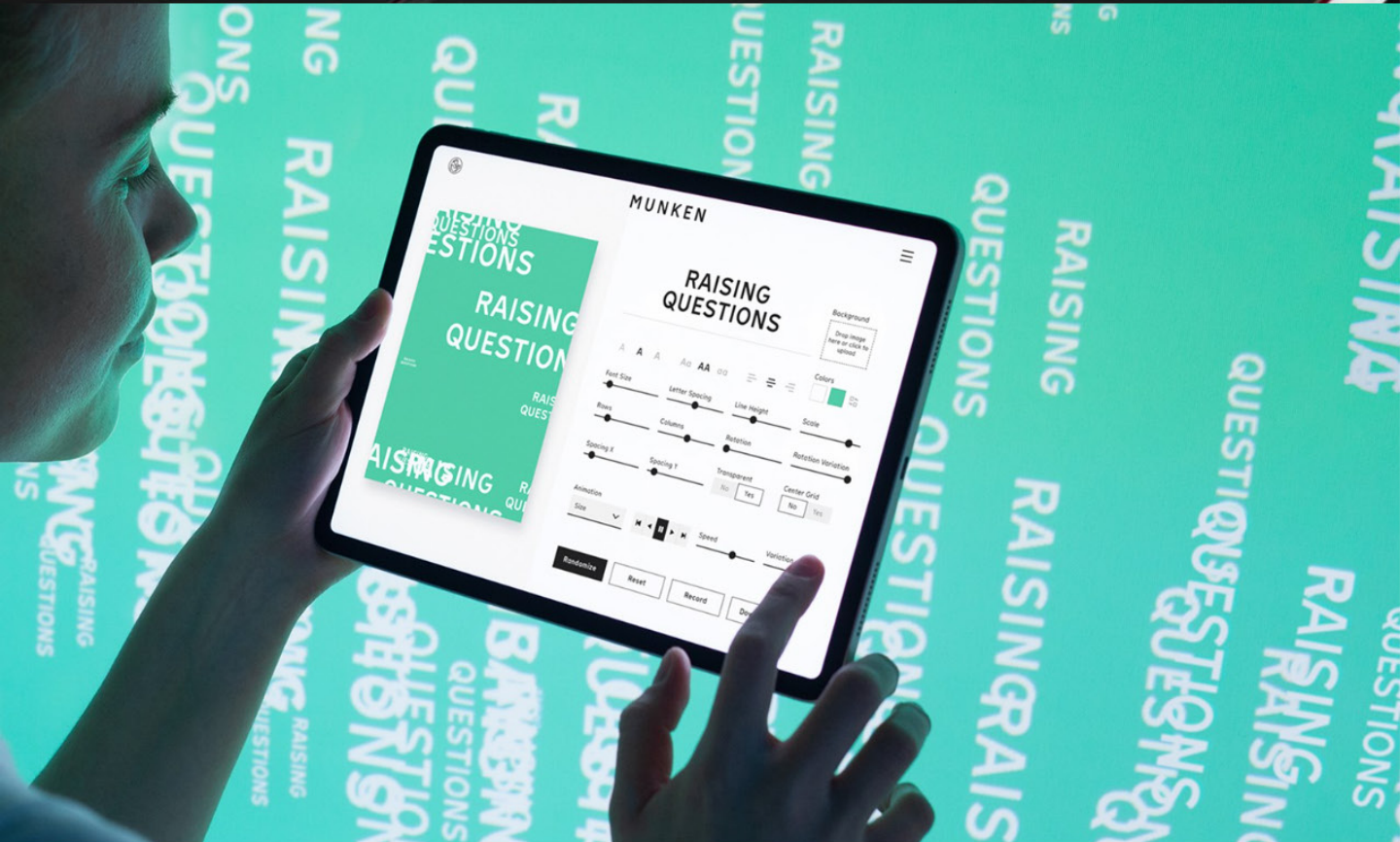
Read more



Let’s load 2024!

The Munken Agenda 2024 is finally available in our shop. It means you can look forward to a new colourful year and start planning the days ahead.

Get your copy



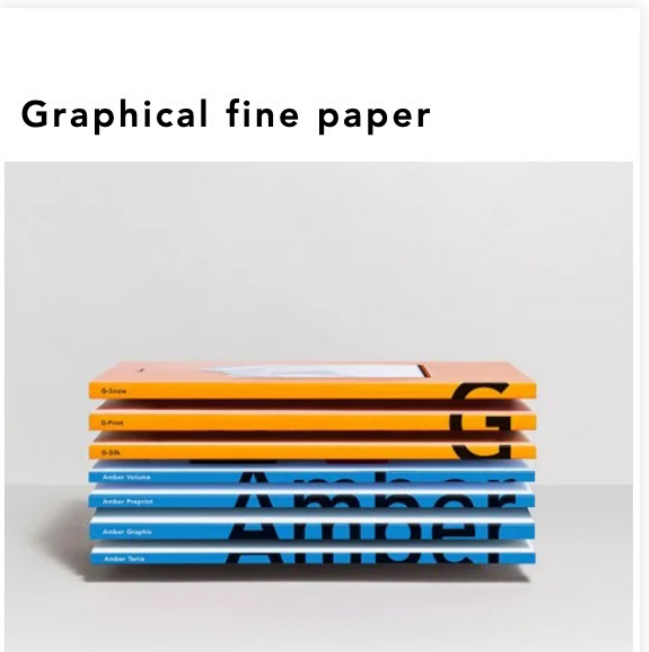
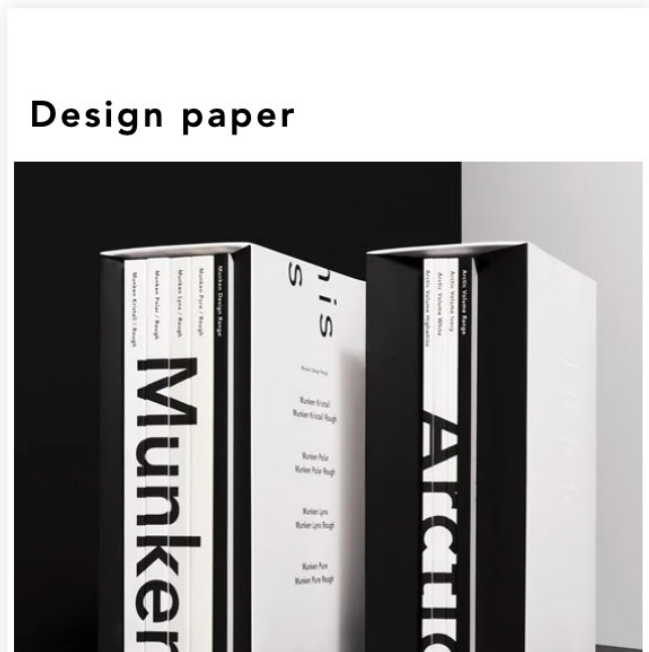
Explore the Munken Creator

Arctic Paper launches the Munken Creator, a web-based application for creating font animations in an experimental way. Use the Munken Sans to experiment, design visually animated messages and inspire to think beyond the boundaries of communication.

Read more

Our product range

Regardless what kind of project you are working on; we have a paper that suits your needs.





Your make it happen paper

No matter what printing challenges you face, Amber is always a smooth solution. The paper range is a broad selection of uncoated high-white quality graphical fine papers with wide grammages suitable for many application areas. Amber offers unique printing properties and outstanding runnabiliy. It's whiteness make sure that written text stand out and leave a strong impression and images are perfectly reproduced. When you are looking for a reliable choice for your everyday work, just add Amber.

Amber Graphic

A true highwhite shade with smooth natural surface, recognised for good runnability and printability.

- Uncoated
- Smooth
- HighWhite

More info

Amber Terra

A true highwhite shade with smooth natural surface and high opacity, recognised for good runnability and printability.

- Uncoated
- Smooth
- HighWhite

More info

Amber Preprint

A highwhite technically advanced paper guaranteed to work on equipment with OCR.

- Uncoated
- Smooth
- HighWhite

More info

Amber Volume

A highwhite woodfree paper with a surface especially suited for all kinds of educational applications.

- Uncoated
- Rough
- HighWhite

More info

Amber Highway Super

A surface-treated paper, custom-made for high-speed inkjet. For b/w text and full color illustrations.

- Uncoated
- Smooth
- HighWhite

More info

Amber Highway Regular

A surface-treated paper, custom-made for high-speed inkjet. For b/w text and spot colour.

- Uncoated
- Smooth
- HighWhite

More info

Get to know Amber

OUR PAPER MILLS

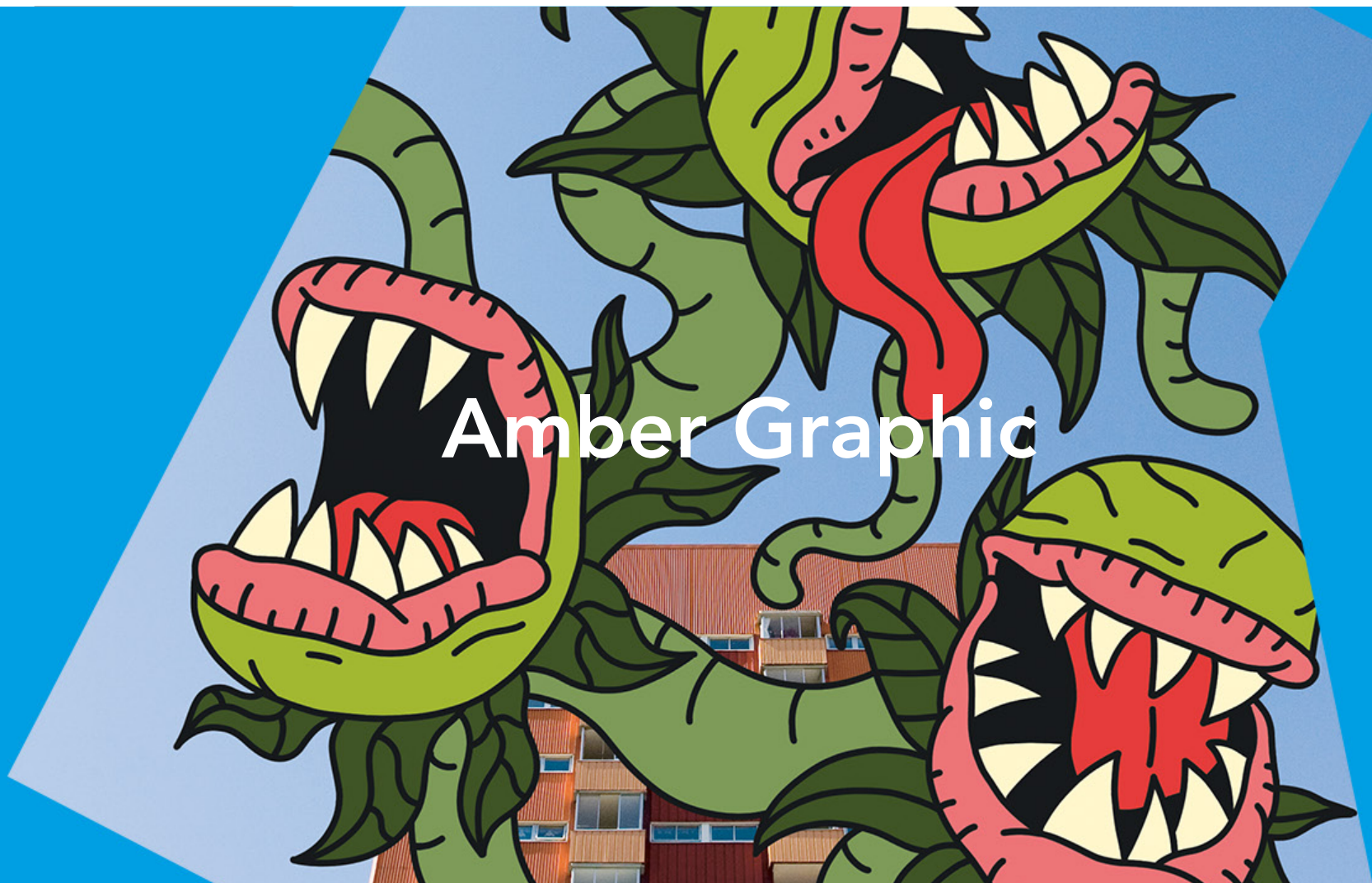
Arctic Paper Kostrzyn

SHOP

Dummyshop

SUSTAINABILITY

A sustainable company



Amber Graphic

Amber Graphic is your everyday solution when looking for an uncoated graphic paper with outstanding runnability andgreat printability.

This paper is available in a wide range of grammages and dedicated for books, dictionaries, advertising materials, pharmaceutical leaflets and brochures. A reliable choice for your everyday challenges.

Technical specifications

Basic information	Surface	Shade	Printing techniques
Optimized for colour printing	Uncoated	HighWhite	Offset
Available in sheets	Smooth		Flexo
Available in reels			

Amber Graphic

Grammage (g/m²)	50 ^G	55 ^G	60	70	80	90	100	110	120	130	140	150	170	200	240	300 ^B	400 ^B
Opacity (%)	82	84	86	90	92	94	95	96	96	97	98	98	98	99	99	100	100
Thickness (µm)	62	68.2	76	89	99	110	122	133	145	156	168	180	204	240	288	360	480
Whiteness (CIE)	143	143	143	143	143	143	143	143	143	143	143	143	143	143	143	143	143
Roughness (Bendtsen, ml/min)	160	160	160	160	160	160	160	160	160	220	220	220	220	220	220	220	220

^G Not standard production. Please contact Sales Office for details.

^B Laminated paper

Screen recommended 133-150 lpi
Values are targets only and can be subject to changes over time without prior notice.
You will find the latest technical information and other technical recommendations about our products at [arcticpaper.com](#)

Technical Specification (pdf)	⬇	ICC Profile (zip)	⬇	Technical Specification US (pdf)	⬇
---	-------------------	-----------------------------------	-------------------	--	-------------------

Certificates, Environment & Quality

We are anxious to preserve our planet and leave the smallest possible footprint in nature. We strive for sustainable manufacturing processes by following a strategy that keeps us one step ahead of international environmental standards and requirements.

[Find all Certificates & Statements +](#)



FSC_C012880

PEFC_0131126

ECF

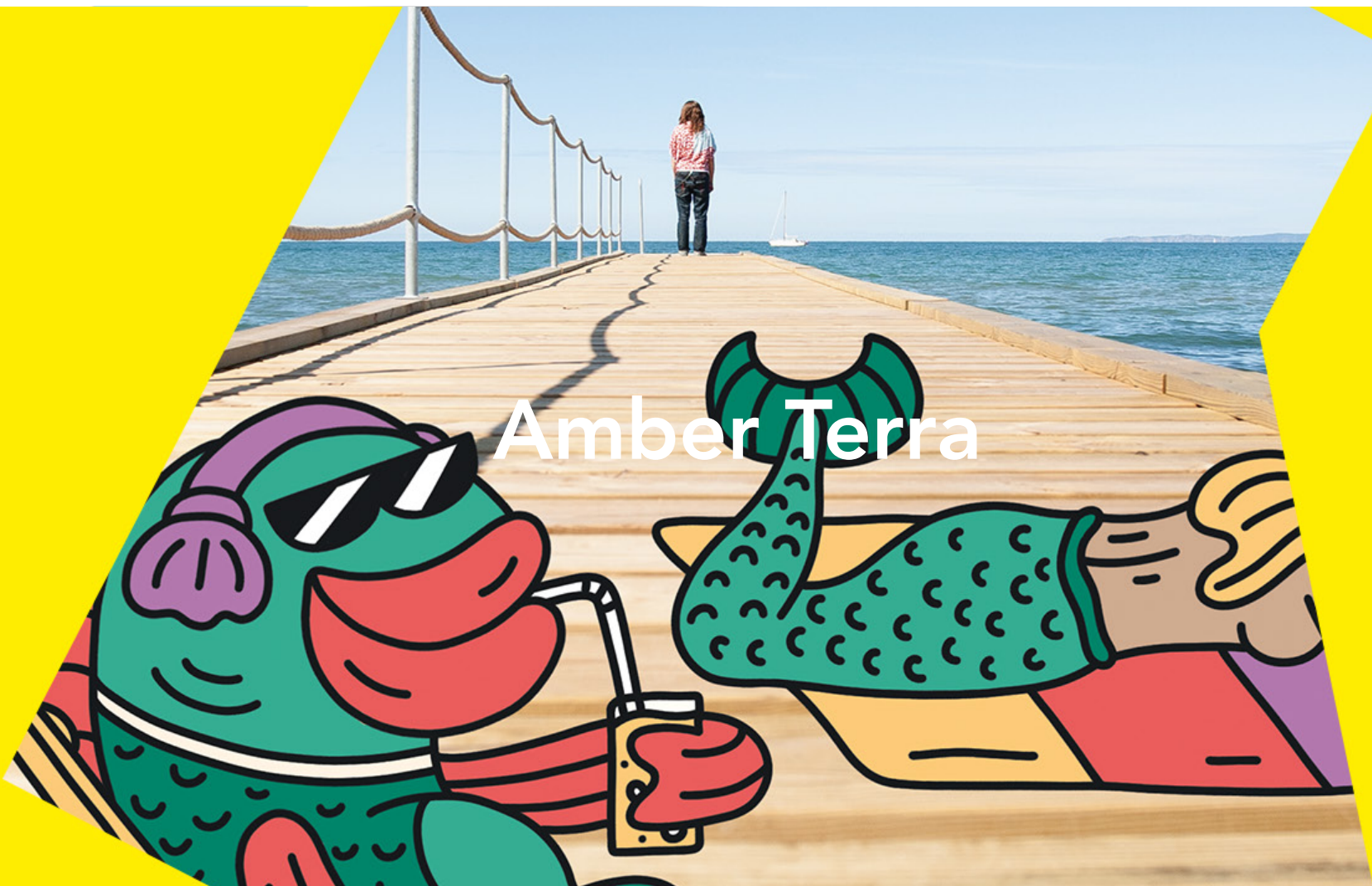
ISO 14001

EMAS

Paper Profile

Safety of Toys

Food contact



Discover a white, uncoated graphic paper perfectly designed for envelopes, printing books, leaflets, and notebooks, in mono and full color.

This light paper is characterised by high opacity, allowing for the use of lower paper grammage without compromising print quality. You can expect a excellent result in both offset and flexographic printing.

Technical specifications

Basic information	Surface	Shade	Printing techniques
Optimized for colour printing	Uncoated	HighWhite	Offset
Available in sheets	Smooth		Flexo
Available in reels			

Amber Terra

Grammage (g/m²)	60	65	70	75	80
Opacity (%)	90	90.5	92	93.5	95
Whiteness (CIE)	143	143	143	143	143
Roughness (Bendtsen, ml/min)	160	160	160	160	160
Thickness (µm)	76	83	89	95	99

Screen recommended 133-150 lpi
Values are targets only and can be subject to changes over time without prior notice.
You will find the latest technical information and other technical recommendations about our products at [arcticpaper.com](#)

Technical Specification (pdf)	↓	ICC Profile (zip)	↓	Technical Specification US (pdf)	↓
-------------------------------	---	-------------------	---	----------------------------------	---

Certificates, Environment & Quality

We are anxious to preserve our planet and leave the smallest possible footprint in nature. We strive for sustainable manufacturing processes by following a strategy that keeps us one step ahead of international environmental standards and requirements.

[Find all Certificates & Statements +](#)



✓	FSC_C012880
✓	ECF
✓	EMAS
✓	Safety of Toys

✓	PEFC_0131126
✓	ISO 14001
✓	Paper Profile
✓	Food contact



Amber Preprint

When your job requires a paper perfect for direct mail, invoices, letterheads, envelopes and advertising material, choose Amber Preprint.

This high white, technically advanced, uncoated paper works perfectly in digital presses and is guaranteed to work in laser printers, even after offset litho printing. Thanks to Amber Preprint properties it can be used in high speed printers and digital devices.

Technical specifications

Basic information	Surface	Shade	Printing techniques
Optimized for colour printing	Uncoated	HighWhite	Offset
Available in sheets	Smooth		Flexo
Available in reels			Laser
			Preprint
			Inkjet (black/white)

Amber Preprint

Grammage (g/m²)	60 ^E	70 ^E	75 ^E	80	90	100	120	160
Opacity (%)	≥88	≥92	≥92	≥93	≥95	≥96	≥98	≥99
Thickness (µm)	78	91	98	104	117	130	156	208
Whiteness (CIE)	167	167	167	167	167	167	167	167
Roughness (Bendtsen, ml/min)	160	160	160	160	200	200	200	230

^E Not standard production. Min. 30 tonnes and paper machine trim needed.

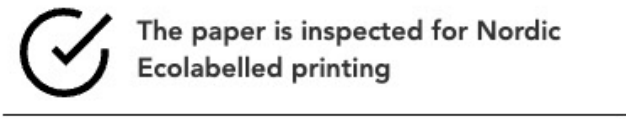
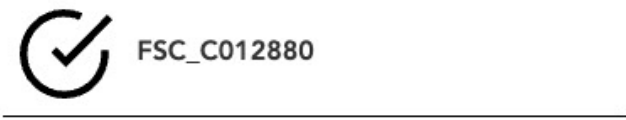
Screen recommended 133-150 lpi
Values are targets only and can be subject to changes over time without prior notice.
You will find the latest technical information and other technical recommendations about our products at [arcticpaper.com](#)

Technical Specification (pdf)	⬇	ICC Profile (zip)	⬇	Technical Specification US (pdf)	⬇
---	-------------------	-----------------------------------	-------------------	--	-------------------

Certificates, Environment & Quality

We are anxious to preserve our planet and leave the smallest possible footprint in nature. We strive for sustainable manufacturing processes by following a strategy that keeps us one step ahead of international environmental standards and requirements.

[Find all Certificates & Statements +](#)



Amber Volume

When you are looking for a woodfree high white bulky uncoated paper for all kinds of educational publishing applications, you should definitely choose Amber Volume.

The surface is perfect for school books, academic literature, reference material and factual books. The bulky paper gives the end product a good strength and great durability, perfect for educational books intended to be used for many years. It also makes it possible to increase the volume of the publication with the same paper weight and number of pages.

Technical specifications

Basic information	Surface	Shade	Printing techniques
Optimized for colour printing	Uncoated	HighWhite	Offset
Available in sheets	Rough		Flexo
Available in reels			

Amber Volume

Grammage (g/m²)	50 ^G	55 ^G	60 ^G	70	80	90
Opacity (%)	80	82	84	89	91	93
Thickness (µm)	75	82.5	90	105	120	135
Bulk (thickness/grammage)	1.5	1.5	1.5	1.5	1.5	1.5
Whiteness (CIE)	143	143	143	143	143	143
Roughness (Bendtsen, ml/min)	550	550	550	550	550	550

^G Not standard production. Please contact Sales Office for details.

Screen recommended 133-150 lpi
Values are targets only and can be subject to changes over time without prior notice.
You will find the latest technical information and other technical recommendations about our products at [arcticpaper.com](#)

Technical Specification (pdf)

Certificates, Environment & Quality

We are anxious to preserve our planet and leave the smallest possible footprint in nature. We strive for sustainable manufacturing processes by following a strategy that keeps us one step ahead of international environmental standards and requirements.

[Find all Certificates & Statements +](#)





Amber Highway Super is your ultimate choice for a high white, uncoated woodfree paper, for both black and white text and vibrant full colour illustrations.

This technically advanced paper is not only compatible with optical character recognition (OCR) equipment but also guarantees aging resistance, making it the ideal choice for your important documents. This versatile paper is therefore recommended for transpromo statements and invoices, manuals, mailings and advertising folders.

Technical specifications

Basic information	Surface	Shade	Printing techniques
Optimized for colour printing	Uncoated	HighWhite	Inkjet (colour)
Available in sheets	Smooth		
Available in reels			

Amber Highway Super

Grammage (g/m ²)	70	80	90	100	120
Opacity (%)	≥93	≥93	≥95	≥96	≥98
Thickness (µm)	88	100	112	125	150
Bulk (thickness/grammage)	1.25	1.25	1.25	1.25	1.25
Whiteness (CIE)	165	165	165	165	165
Roughness (Bendtsen, ml/min)	160	160	160	160	160

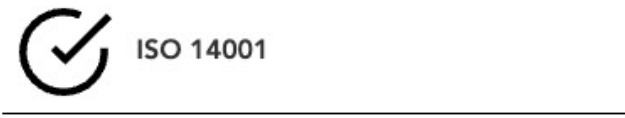
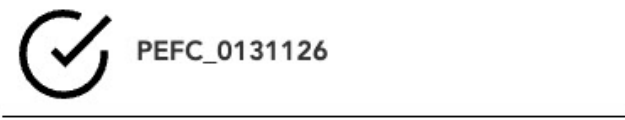
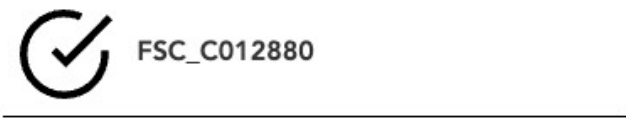
Values are targets only and can be subject to changes over time without prior notice.
You will find the latest technical information and other technical recommendations about our products at [arcticpaper.com](#)

- [Technical Specification \(pdf\)](#)
- [Technical Specification US \(pdf\)](#)

Certificates, Environment & Quality

We are anxious to preserve our planet and leave the smallest possible footprint in nature. We strive for sustainable manufacturing processes by following a strategy that keeps us one step ahead of international environmental standards and requirements.

[Find all Certificates & Statements +](#)





Explore the versatility of a high white, uncoated woodfree and technically advanced paper. Amber Highway Regular is a cutting-edge paper designed for black-and-white text and spot color, providing a medium colour density that ensures professional and impactful prints.

It is guaranteed a seamless performance on equipment with optical character recognition (OCR) and is certified for exceptional aging resistance, making it the ideal choice for important documents like statements, invoices, manuals and black and white books.

Technical specifications

Basic information	Surface	Shade	Printing techniques
Optimized for text	Uncoated	HighWhite	Inkjet (black/white)
Available in sheets	Smooth		
Available in reels			

Amber Highway Regular

Grammage (g/m²)	70	80	90	100	120
Opacity (%)	≥93	≥93	≥95	≥96	≥98
Thickness (µm)	88	100	112	125	150
Bulk (thickness/grammage)	1.25	1.25	1.25	1.25	1.25
Whiteness (CIE)	165	165	165	165	165
Roughness (Bendtsen, ml/min)	160	160	160	160	160

Values are targets only and can be subject to changes over time without prior notice.
You will find the latest technical information and other technical recommendations about our products at [arcticpaper.com](#)

Technical Specification (pdf)



Technical Specification US (pdf)



Certificates, Environment & Quality

We are anxious to preserve our planet and leave the smallest possible footprint in nature. We strive for sustainable manufacturing processes by following a strategy that keeps us one step ahead of international environmental standards and requirements.

[Find all Certificates & Statements +](#)

